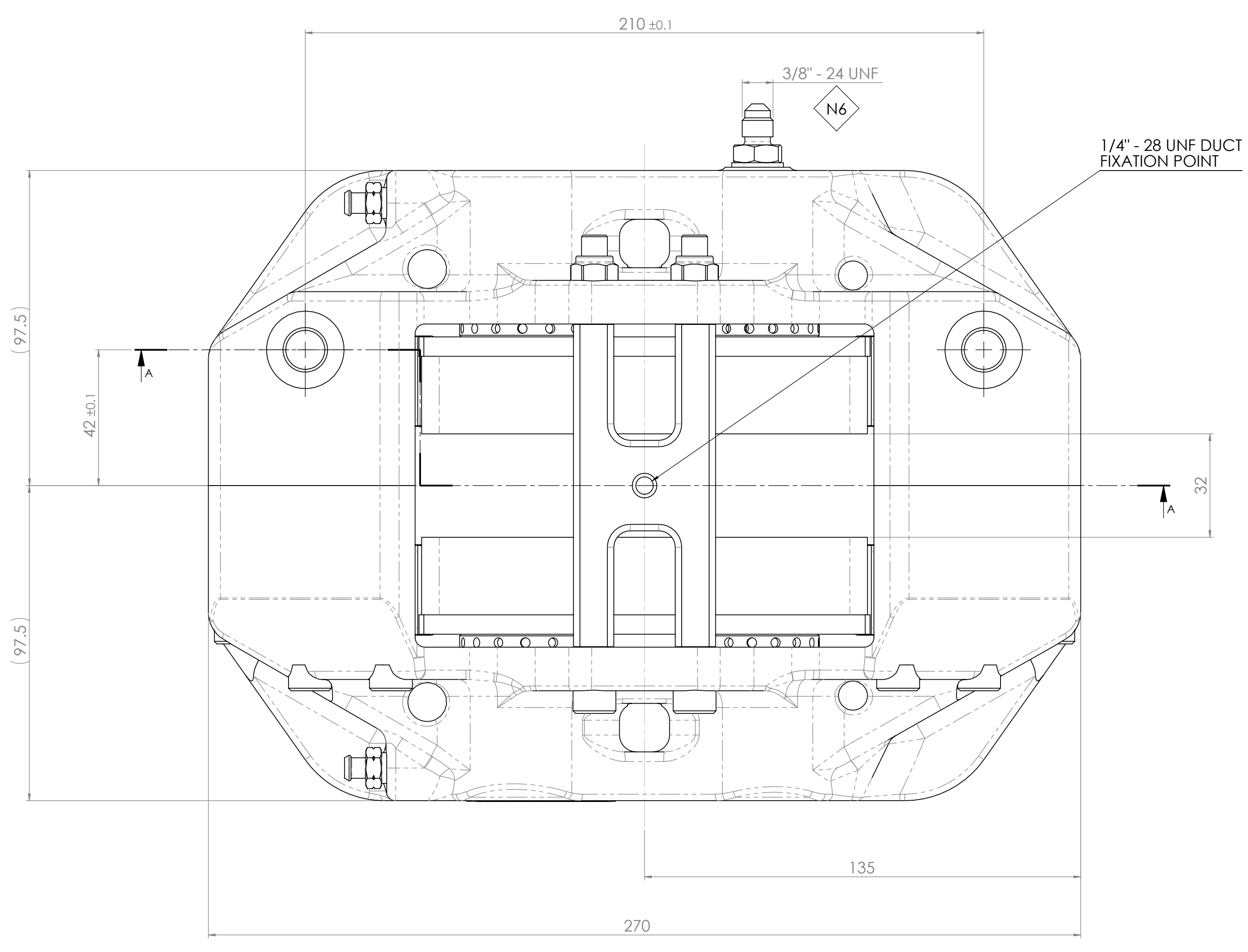
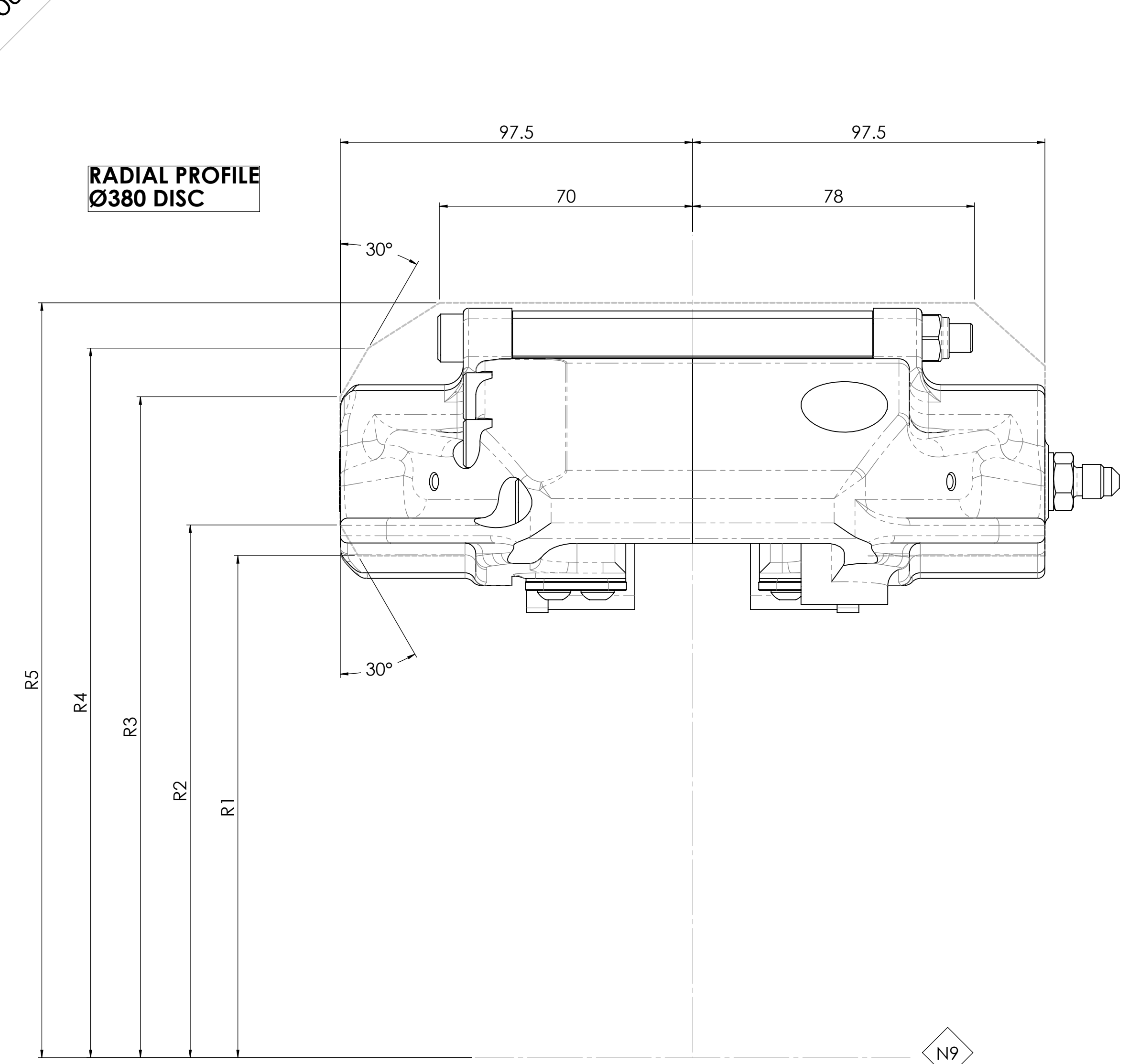


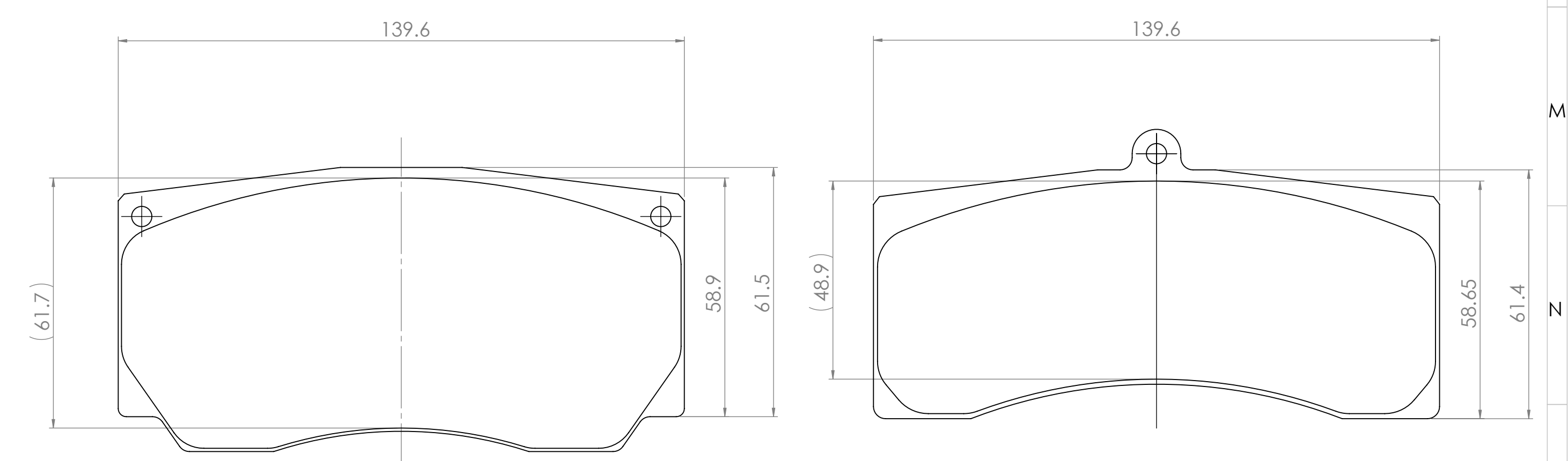
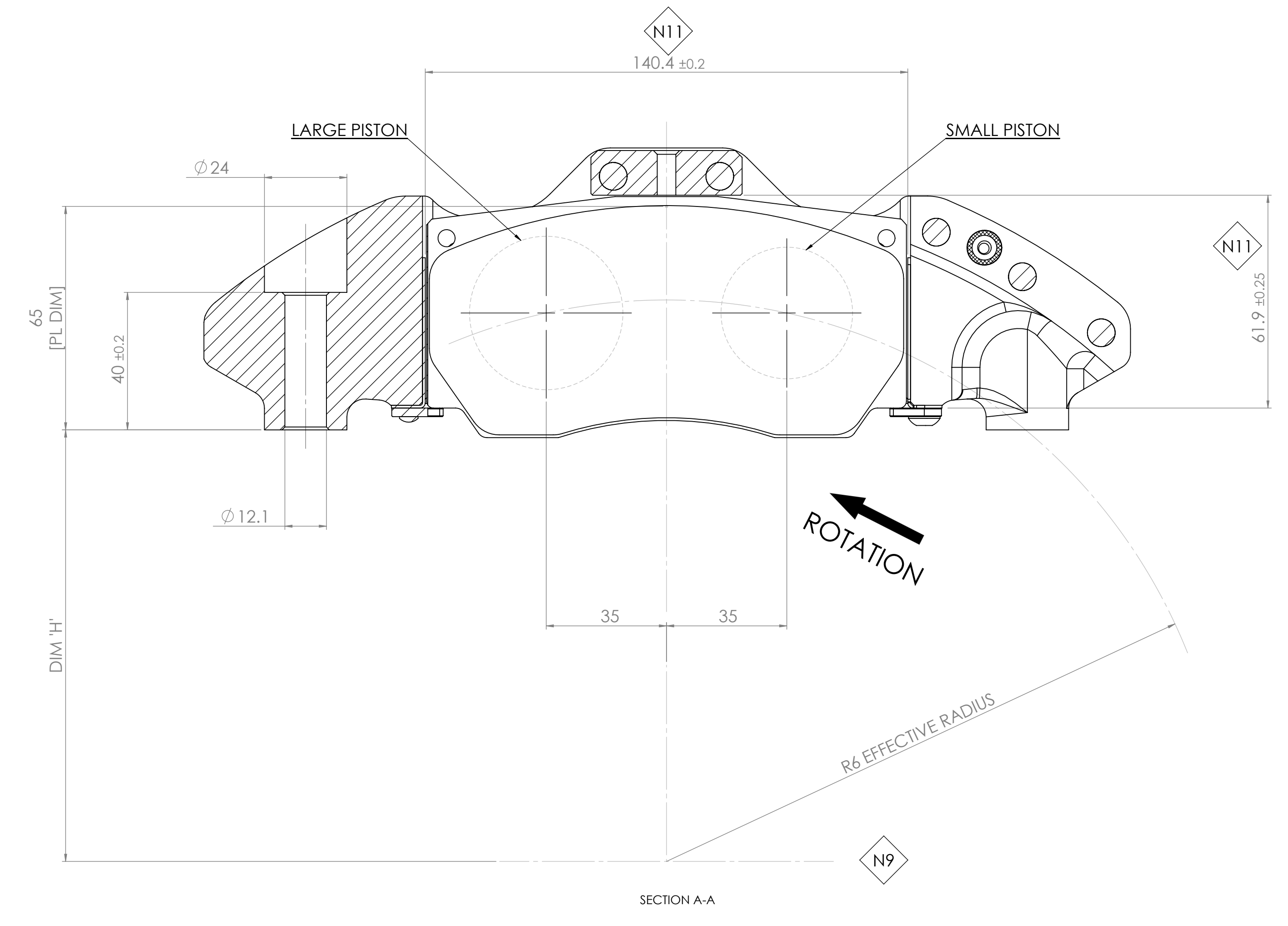
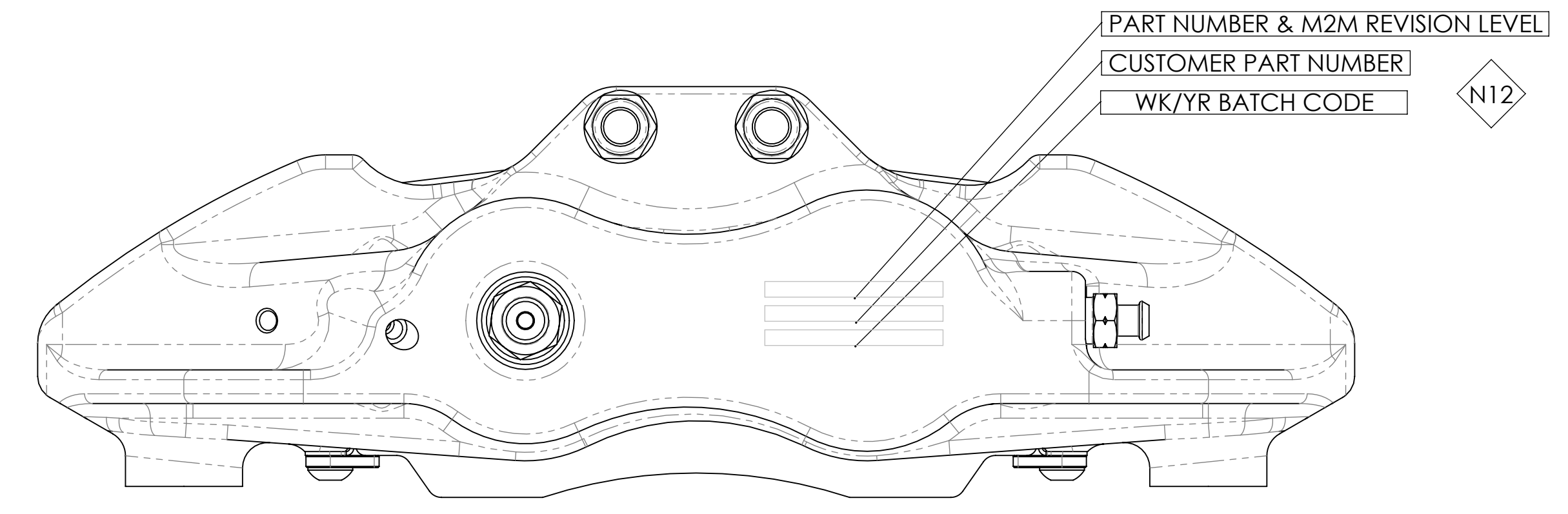
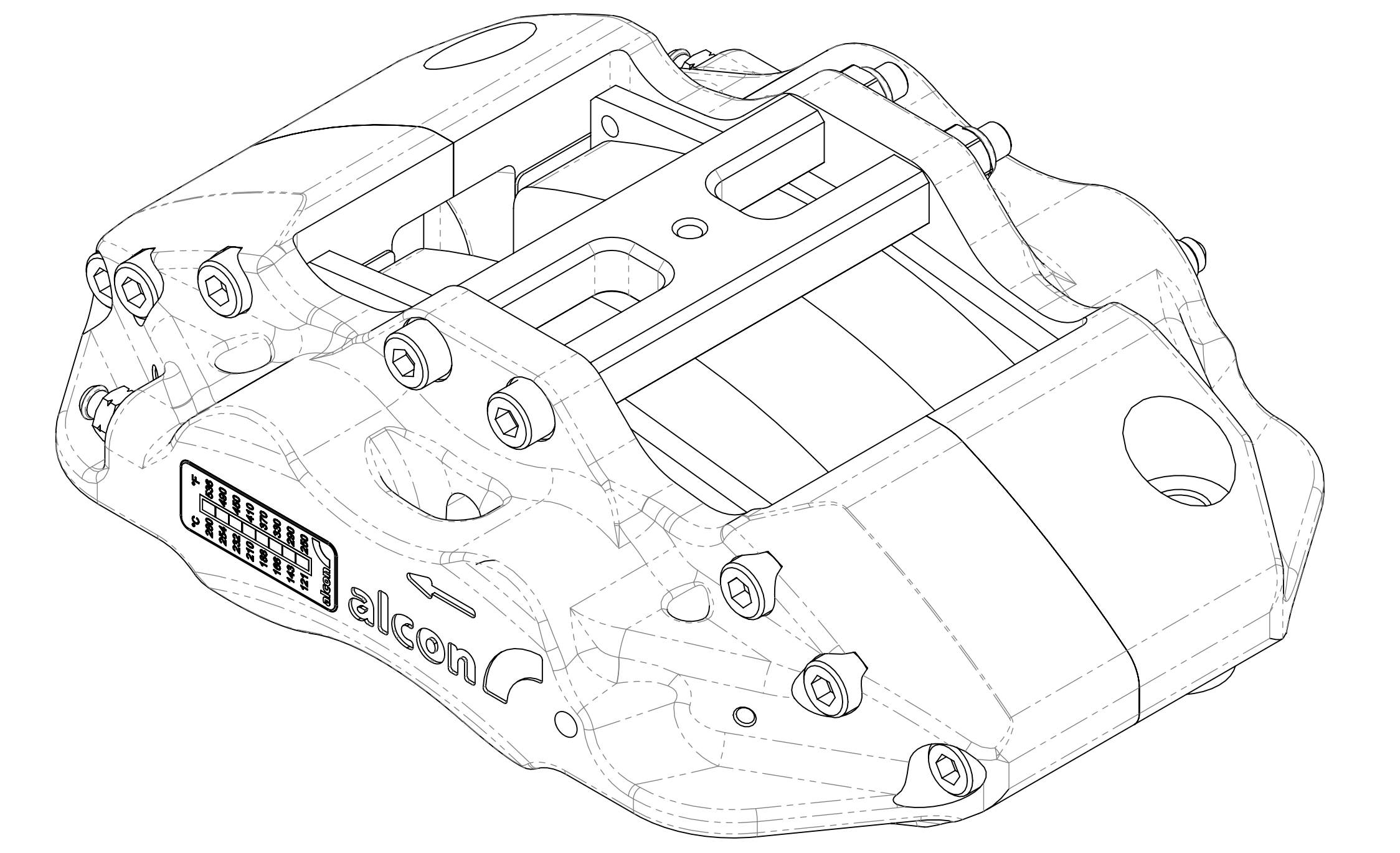
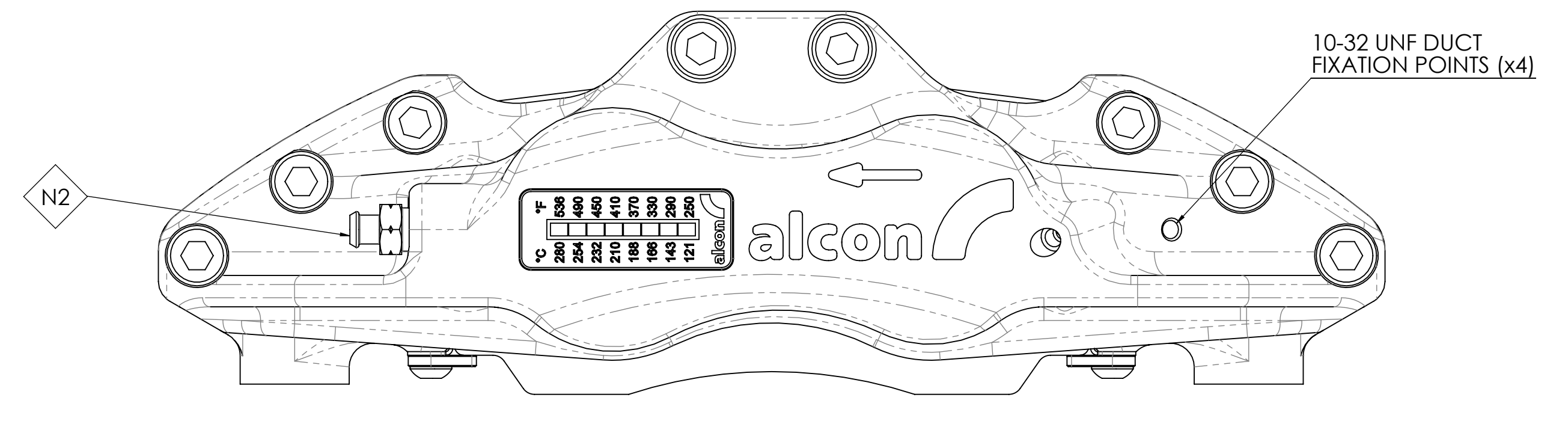
DO NOT SCALE  
IF IN DOUBT ASK

N14	BEFORE SURFACE TREATMENT
	BEFORE SURFACE TREATMENT
	PART NUMBER & M2M REVISION LEVEL
	JOB ORDER NUMBER & MATERIAL BATCH CODE
	TEXT HEIGHT: 3.2mm, MARKING 0.1mm
	MARKING METHOD: <input checked="" type="checkbox"/> LASER <input type="checkbox"/> MACHINING <input type="checkbox"/> STAMP
	<input type="checkbox"/> CAST <input type="checkbox"/> STICKER <input type="checkbox"/> ENGRAVE
	<input type="checkbox"/> METAL TAG <input type="checkbox"/> MARKER PEN <input type="checkbox"/> LABEL
	<input type="checkbox"/> ELECTRO-CHEMICAL <input type="checkbox"/> PLASTIC BAG



- NOTES:**
- N1: LEFT HAND TRAILING CALIPER AS DRAWN  
RIGHT HAND TRAILING CALIPER SYMMETRICALLY OPPOSITE
  - N2: BLEED SCREW: 3/8"-24 UNF, MAXIMUM TORQUE: 14Nm HOT  
18Nm COLD
  - N3: INSTALL CALIPER WITH PAD 0.5mm ABOVE DISC &  
A MINIMUM CLEARANCE BETWEEN DISC & CALIPER OF 2.5mm
  - N4: TOTAL CALIPER PISTON AREA: 53.8cm<sup>2</sup>
  - N5: CALIPER MOUNTING FACE
  - N6: FLUID INLET PORT
  - N7: CALIPERS SUPPLIED LESS PADS
  - N8: DISC SIZE: Ø380 x 32mm
  - N9: DISC AXIS
  - N10: ALL DIMENSIONS ARE NOMINAL AND IN mm UNLESS  
OTHERWISE STATED.
  - N11: DIMENSIONS FOR PAD FITMENT
  - N12: LASER MARK - LASER MARK AS SPECIFIED (PART NUMBER AND  
M2M REVISION LEVEL)  
CUSTOMER PART NUMBER (WHERE SPECIFIED, SEE JOB TRAVELLER)  
BATCH CODE

DISC Ø	R1	R2	R3	R4	R5	R6	DIM 'H'
380	139	147.5	183	196.45	209	163.3	125.5

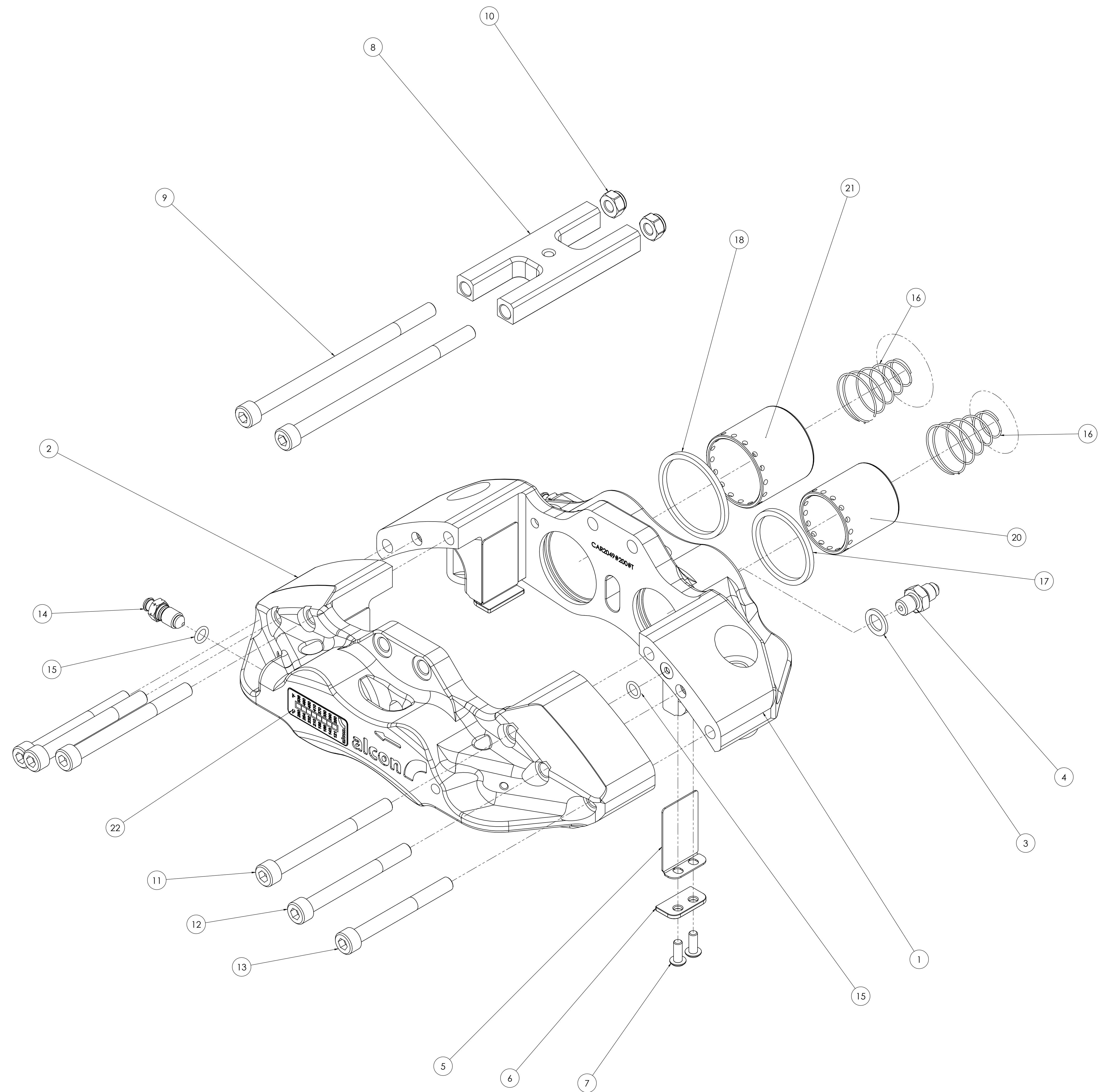


CAR2049J04DSRT	RIGHT HAND	TRAILING	Ø 38.1	Ø 44.5	
CAR2049J04DSLTL	LEFT HAND	TRAILING	Ø 38.1	Ø 44.5	
<b>Alcon Part No.</b>	<b>Hand</b>	<b>Orientation</b>	<b>Small Bore</b>	<b>Large Bore</b>	<b>Remarks</b>

B DEEP PAD REFERENCE UPDATED AND THICKNESS CORRECTED.		CW 14.01.15
A FIRST ISSUE		IF GW 03.11.14
Issue Change	LOC	DRN BY / Date
DRAWN IN SOLIDWORKS WEIGHT: (7.33lbs) 3325 grams REMOVE ALL SHARP EDGES, BURRS AND SWARP FABRIC: Ra Ra ALL DIMENSIONS ARE BEFORE TREATMENT UNLESS STATED TOLERANCES UNLESS STATED ±0.2, ANGLES: ±0.5	SCALE: 1:1 DRAWN BY: L. RATCLIFFE DATE: 03.11.14 CHECKED BY: G. WISEMAN DATE: 03.11.14 HEAT TREATMENT: CLURE CYCLE SURFACE TREATMENT:	ALCON COMPONENTS LIMITED APOLLO TOWNWORTH STAFFORDSHIRE B79 7TN TEL: +44(0)1827 723700 NOTE: THIS DRAWING AND INFORMATION THEREUPON IS THE PROPERTY OF ALCON COMPONENTS LTD. IT IS LENT ON THE CONDITION THAT IT IS NOT TO BE REPRODUCED, COPIED, LENT OR DISCLOSED TO ANY PERSON WITHOUT WRITTEN CONSENT OF ALCON AND SHALL BE RETURNED TO ALCON COMPONENTS LTD. PART NAME (max. 40 chars): CALIPER ASSEMBLY PART NUMBER: CAR20104 REV: B 1 of 2 A0



DO NOT SCALE  
IF IN DOUBT ASK



ITEM NO.	ASSEMBLY Dwg/ QTY.	PART NUMBER	WEIGHT (g)	MATERIAL	Description	REMARKS
1	1	CAR2049X200LT	1236.78	ALUMINIUM	CALIPER BODY	
2	1	CAC2049X201LT	1175.69	ALUMINIUM	CALIPER COVER	
3	1	FCG0080X015	1.74	COPPER	COPPER GASKET	
4	1	FSA3435X630	16.47	STEEL	3/8" UNF FLUID INLET ADAPTOR	19 Nm ±1 WITH LOCTITE 241
5	4	PSC4412X100	8.83	STAINLESS STEEL	ABUTMENT WEAR PLATE	
6	4	SSC4412X102	7.15	STAINLESS STEEL	PAD SUPPORT	
7	8	BSB0080X742	0.006	STEEL	10-32UNF x 1/2" BUTTON HEAD SCREW	2.3 / 2.7 Nm WITH LOCTITE 241
8	1	RAC4420X100	78.99	ALUMINIUM	PAD RETAINER	
9	2	BSS0080X238	63.46	STEEL	M8 BOLT x 140mm	12 Nm ±1
10	2	NSC0080X125	6.64	STEEL	M8 LOCKNUT	
11	2	BSS0080X022D	43.37	STEEL	M8 BOLT x 90mm	41Nm ±1.3
12	2	BSS4420X102	39.37	STEEL	M8 BOLT x 80mm	
13	2	BSS0080X058D	37.34	STEEL	M8 BOLT x 75mm	
14	2	FSB3430X689	11.05	STEEL	BLEED SCREW 3/8"UNF ('O' RING TYPE)	14Nm - HOT 18Nm - COLD
15	3	SER0080X176	0.05	EPDM RUBBER	Ø7.1 x 1.6 EPDM O-SEAL	
16	4	SSC3435X609	2.59	STAINLESS STEEL	2Kg ANTI-KNOCKBACK SPRING	
17	2	SES3800X900	1.26	EPDM RUBBER	Ø38.1 PRESSURE SEAL	
18	2	SES4500X900	1.45	EPDM RUBBER	Ø48.6 x2.98 SEAL EPDM 80 (BLUE)	
20	2	PSV3841X250E	110.82	STAINLESS STEEL	Ø38.1 STEEL PISTON	
21	2	PSV4541X250E	142.58	STAINLESS STEEL	Ø44.5 STEEL PISTON	
22	1	THS0080X087	0.15		THERMAL STRIP - ALCON 121°C - 280°C	

DRAWN IN SOLIDWORKS WEIGH: (7.33lbs) 3325 grams REMOVE ALL SHARP EDGES, BURRS AND SWARP FINISH: Ra Ra ALL DIMENSIONS ARE BEFORE TREATMENT UNLESS STATED TOLERANCES UNLESS STATED ±0.2, ANGLES: ±0.5°	SCALE: 1:1 MATERIAL:	DRAWN BY: L. RATCLIFFE DATE: 03.11.14 CHKD BY: G. WISEMAN DATE: 03.11.14 APVD BY: DATE: NO. OF INSPECTION FEATURES:	ALCON COMPONENTS LIMITED APOLLO TOWN STAFFORDSHIRE B79 7TN TEL: +44(0)1827 723700 NOTE: THIS DRAWING AND INFORMATION THERE UPON IS THE PROPERTY OF ALCON COMPONENTS LTD. IT IS LENT ON THE CONDITION THAT IT IS WHOLE OR IN PART SHALL NOT BE REPRODUCED, COPIED, LENT OR DISCLOSED TO ANY PERSON WITHOUT WRITTEN CONSENT OF ALCON AND SHALL BE RETURNED TO ALCON COMPONENTS LTD. PART NAME (max. 40 CHARS): CALIPER ASSEMBLY PART NUMBER: CAR20104 2 of 2 A0
---	-------------------------	---	--