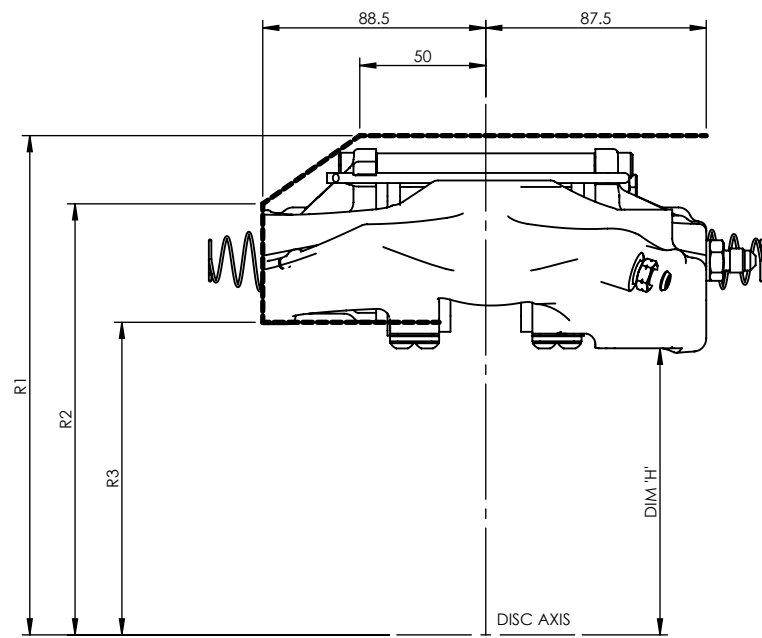
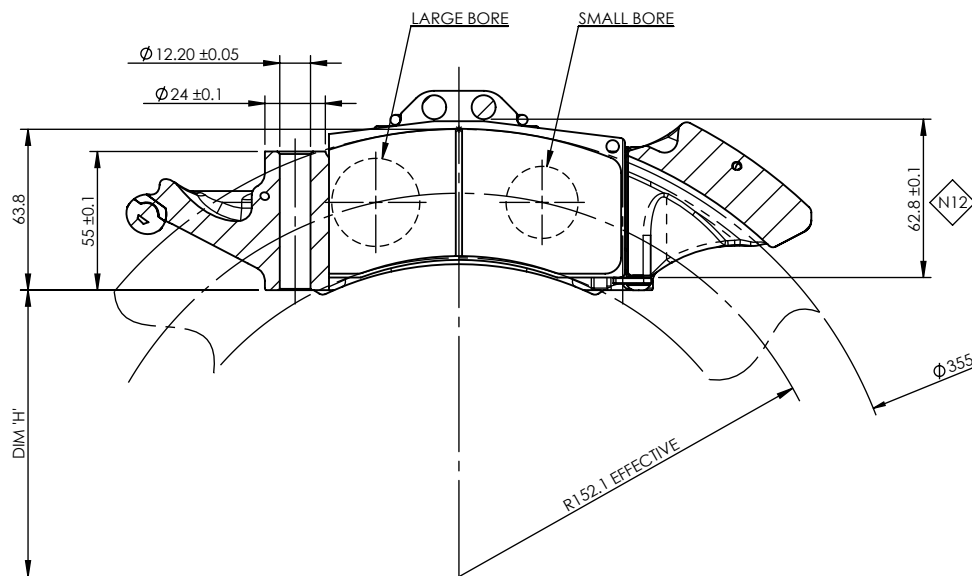
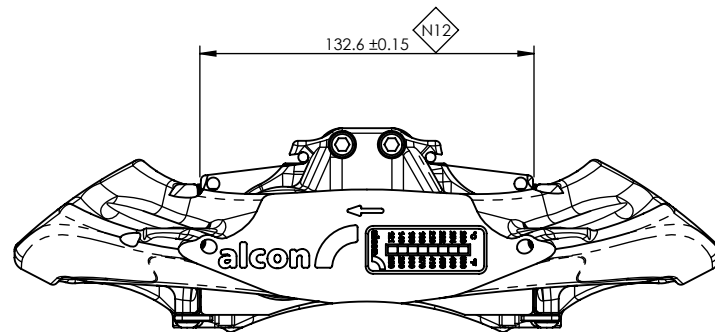
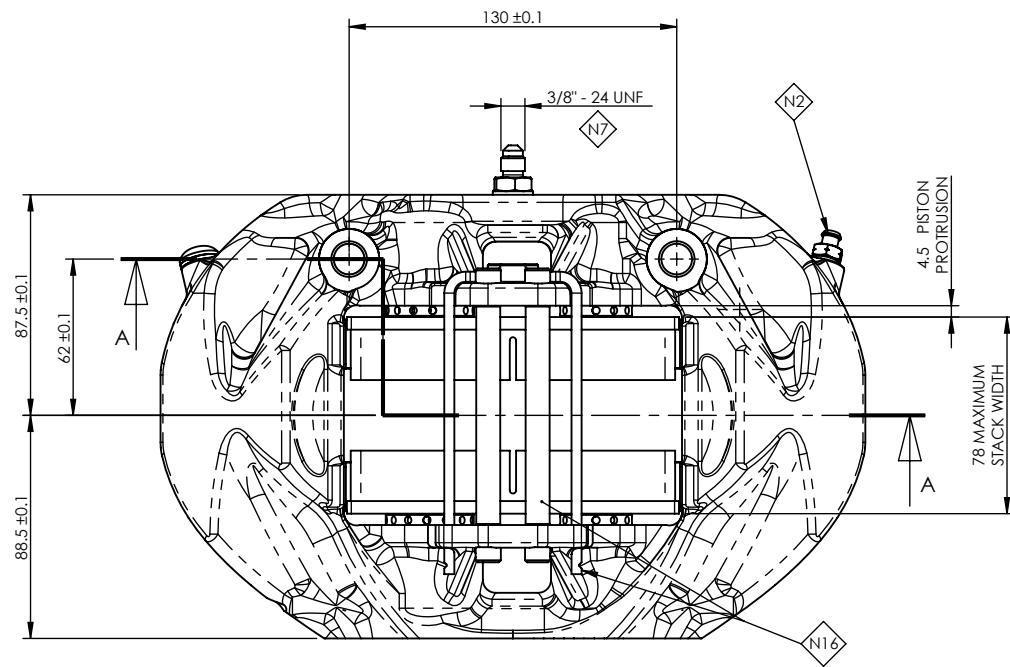


DO NOT SCALE  
IF IN DOUBT ASK

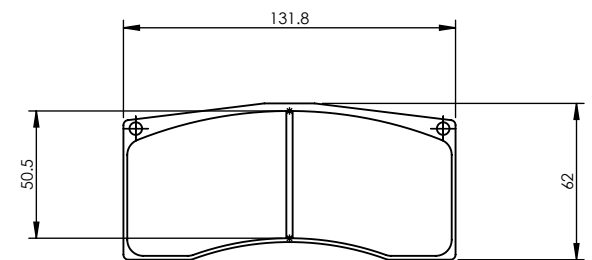


DISC Ø	R1	R2	R3	DIM 'H'
Ø328	192.5	158	110.5	100.2
Ø355	202	171	124	113.7



NOTES:

- N1: LEFT HAND LEADING CALIPER AS DRAWN  
RIGHT HAND LEADING CALIPER SYMMETRICALLY OPPOSITE
- N2: BLEED SCREW: 3/8"-24 UNF, MAXIMUM TORQUE: 14Nm HOT  
18Nm COLD
- N3: INSTALL CALIPER WITH PAD 0.5mm ABOVE O.D. OF DISC &  
A MINIMUM CLEARANCE BETWEEN DISC & CALIPER OF 2.5mm
- N4: ALL DIMENSIONS ARE NOMINAL UNLESS OTHERWISE STATED
- N5: TOTAL CALIPER PISTON AREA: 32.0cm<sup>2</sup>
- N6: CALIPER MOUNTING FACE
- N7: FLUID INLET
- N8: CALIPERS SUPPLIED LESS PADS
- N9: DISC SIZES: Ø355 x 32mm MAX  
Ø328 x 28mm MIN
- N10: DISC AXIS
- N11: ALL DIMENSIONS IN mm
- N12: DIMENSIONS FOR PAD FITMENT
- N13: CALIPER DESIGNED FOR USE WITH CONVENTIONAL 'O' RING SEAL  
3/8"-24 UNF BLEED SCREW. DRY BREAKS CAN BE ORDERED  
SEPARATELY FROM ALCON, PART NUMBER FTQ4410X637.
- N14: CALIPER ASSEMBLY WEIGHT LESS PADS 2.50Kg
- N15: DUE TO COMPLEXITY OF CALIPER SHAPE, WHEEL CLEARANCE  
CHECKS SHOULD BE CARRIED OUT WITH 3D MODEL WHICH  
IS AVAILABLE ON REQUEST.
- N16: THIS CALIPER CAN BE USED WITH THE PAD RETAINING 'SLEEVES'  
REMOVED. ALCON RECOMMEND THAT WHEN USING THE CALIPER  
WITH ONLY THE PAD RETAINING 'WIRE' FITTED, THAT THE WIRE  
ENDS ARE LOCK WIRED TOGETHER.

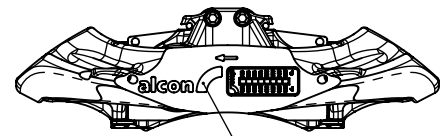


◇ N8 PAD SHAPE - 4441X500  
THICKNESS - 23, 24 OR 25mm  
AREA - 64.5cm<sup>2</sup>

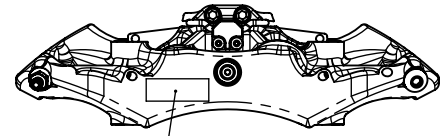
CAR2349AE23VESRL	RIGHT	LEADING	Ø28.6	Ø34.9	
CAR2349AE23VESLL	LEFT	LEADING	Ø28.6	Ø34.9	
<b>Alcon Part No.</b>	<b>Hand</b>	<b>Orientation</b>	<b>Small Bore</b>	<b>Large Bore</b>	<b>Remarks</b>

Issue	Change	LOC	DRN BY / Date	CHK BY / DATE	APP BY / Date
A	FIRST ISSUE				
DRAWN IN SOLIDWORKS		SCALE: 1:3	DRAWN BY: G WISEMAN		ALCON COMPONENTS LIMITED
WEIGHT: 2.50Kg			DATE: 27.09.12		APOLLO TAIWORTH STAFFORDSHIRE B79 7TN TEL: +44(0)1827 723700
REMOVE ALL SHARP EDGES, BURRS AND SWarf			CHECKED BY: S HODKINS		NOTE: THIS DRAWING AND INFORMATION THERE UPON IS THE PROPERTY OF ALCON COMPONENTS LTD. IT IS LENT ON THE CONDITION THAT IT IN WHOLE OR IN PART, SHALL NOT BE REPRODUCED, COPIED, LENT OR DISCLOSED TO ANY PERSON WITHOUT WRITTEN CONSENT OF ALCON AND SHALL BE RETURNED TO ALCON COMPONENTS LTD.
TOLERANCES UNLESS STATED			DATE: 04.10.12		
SURFACE TREATMENT			APP'D BY:		PART NAME (Max. 40 chars): GRAND Am GX REAR
SURFACE TREATMENT			DATE:		PART NUMBER: CAR23i23
SURFACE TREATMENT			DATE:		REV. NO.: A
SURFACE TREATMENT			DATE:		SHEET NO.: 1 of 2
SURFACE TREATMENT			DATE:		SHEET SIZE: A3

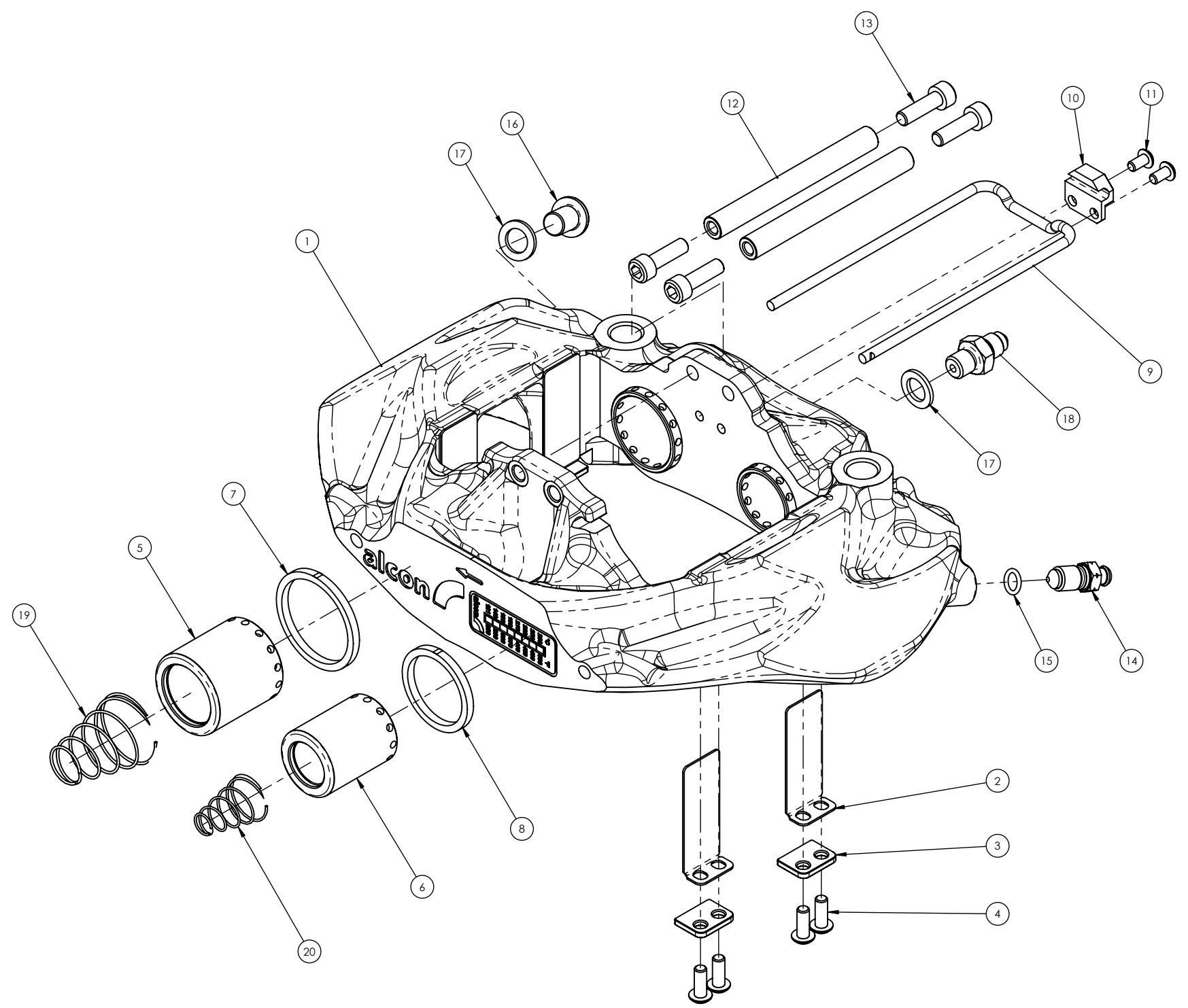
DO NOT SCALE IF IN DOUBT ASK



ALCON LOGO & ARROW TO BE FILLED WITH WHITE PAINT (HIGH TEMP)



LASER MARK ALCON PART NUMBER, DATE ASSEMBLED, ASSEMBLER, AND CUSTOMER PART NUMBER (IF SPECIFIED ON JOB CARD)



ITEM	QTY.	PART NUMBER	DESCRIPTION	REMARKS
1	1	CAR2349AE710L	CALIPER BODY	
2	4	PSC4423X100	END WEAR PLATE	
3	4	SSC4423X102	PAD SUPPORT	
4	8	BSB0080X742	10-32UNF x 1/2" BUTTON HEAD SCREW	4.8/5.4Nm WITH LOCTITE 241
5	2	PTV3536X250E	Ø38.1 TITANIUM PISTON PISTON	
6	2	PTV2936X250E	Ø38.1 TITANIUM PISTON PISTON	
7	2	SES3500X751	Ø34.9 PISTON SEAL	
8	2	SES2900X751	Ø28.6 PISTON SEAL	
9	1	SSR4423X333		
10	1	PSC4423X109	PAD WIRE RETAINER	
11	2	BSB0080X743	8-32 UNC x 0.3125" BUTTON HEAD BOLT	4.8/5.4Nm WITH LOCTITE 241
12	2	PSC4468X730A	PAD RETAINER	
13	4	BSS0080X917	M6 x 1.0 x 20mm BOLT	10Nm±1 WITH LOCTITE 241
14	1	FSB3430X689	BLEED SCREW 3/8"UNF ('O' RING TYPE)	14Nm HOT - MAX 18Nm COLD - MAX
15	1	SER0080X176	0.280"X0.063" EPDM O-SEAL	
16	1	BSB0080X005	3/8"-24 UNF BUTTON HEAD LOW PROFILE	19Nm±1 WITH LOCTITE 241
17	2	FCG0080X015	COPPER GASKET	
18	1	FSA3435X630	3/8" UNF FLUID INLET ADAPTOR	19Nm±1 WITH LOCTITE 241
19	2	SSC3435X609	2Kg ANTI-KNOCKBACK SPRING	
20	2	SSC3435X616	2Kg ANTI-KNOCKBACK SPRING	
21	6	PSC0080X603	LEE PLUG 4.0 SHORT STAINLESS STEEL	
22	1	THS0080X087	THERMAL STRIP - ALCON 121°C - 280°C	

DRAWN IN SOLIDWORKS WEIGHT: 2.50kg grams FINISH: Ra (Ra)	SCALE: 1:3 MATERIAL: --- BULLET/CASTING: --- HEAT TREATMENT: --- TOLERANCES UNLESS STATED: --- SURFACE TREATMENT: ---	DRAWN BY: G WISEMAN DATE: 27.09.12 CHECKED BY: S HODGKINS DATE: 04.10.12 APP'D BY: --- DATE: --- SURFACE TREATMENT: ---	ALCON COMPONENTS LIMITED APOLLO TOWN STAFFORDSHIRE B79 7TN TEL: +44(0)1827 723700 NOTE: THIS DRAWING AND INFORMATION THERE UPON IS THE PROPERTY OF ALCON COMPONENTS LTD. IT IS LENT ON THE CONDITION THAT IT IN WHOLE OR IN PART, SHALL NOT BE REPRODUCED, COPIED, LENT OR DISCLOSED TO ANY PERSON WITHOUT WRITTEN CONSENT OF ALCON AND SHALL BE RETURNED TO ALCON COMPONENTS LTD. PART NAME (Max. 40 chars): GRAND Am GX REAR PART NUMBER: CAR23123 REV. NO.: A SHEETS: 2 of 2 SHEET NO.: A3
--	--	---	--