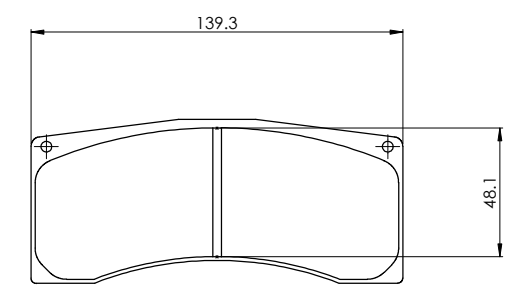
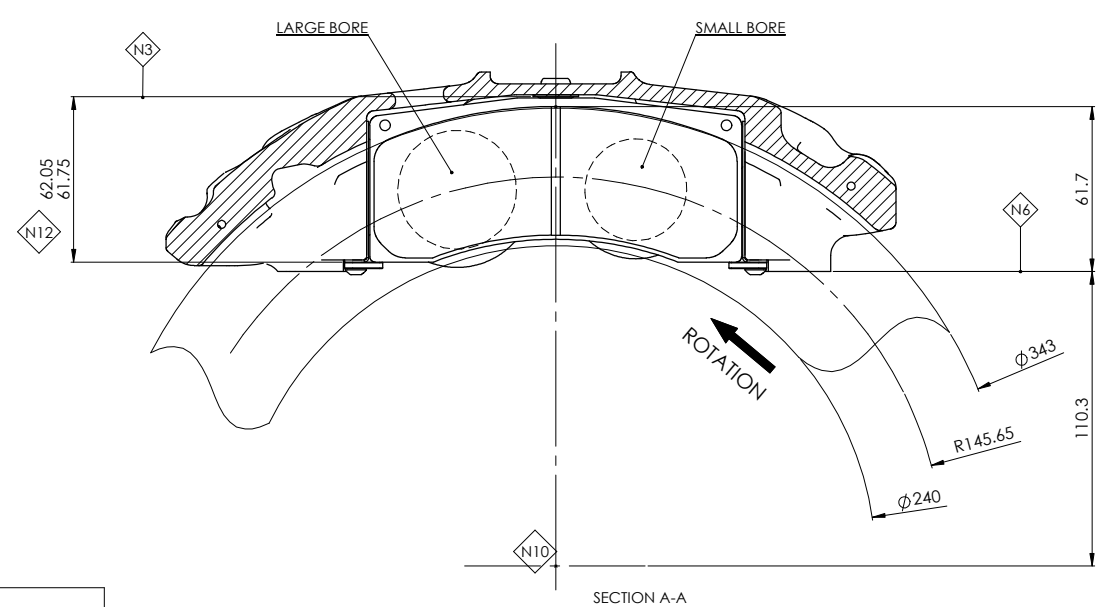
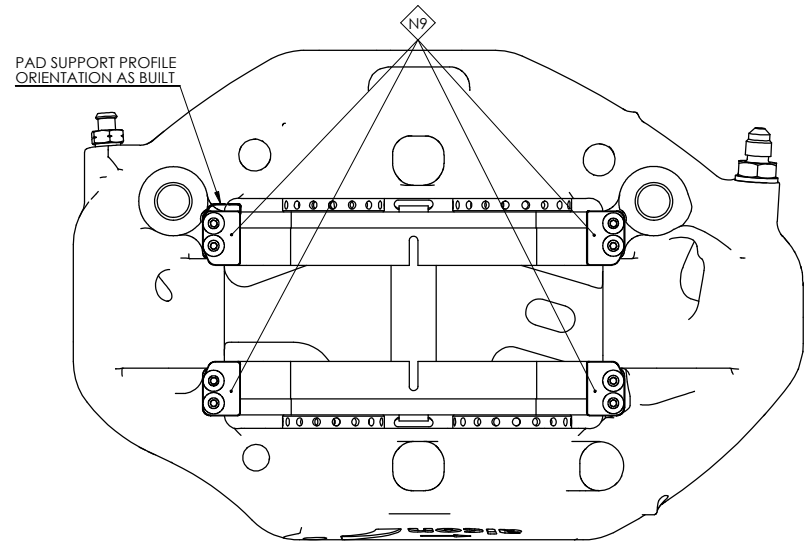
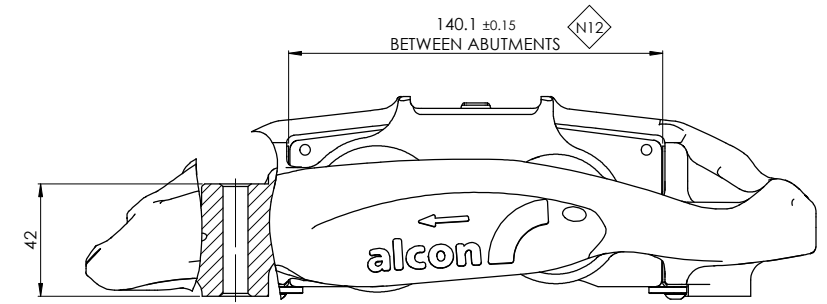
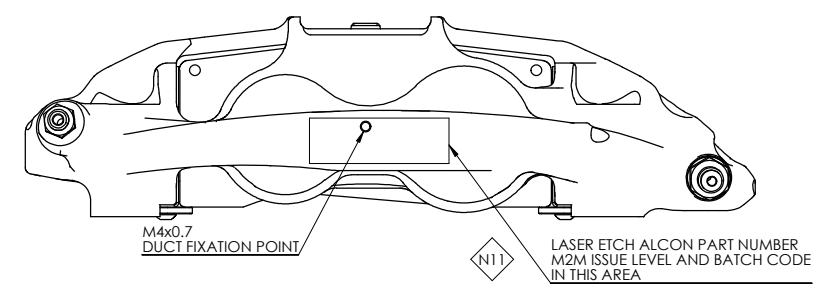
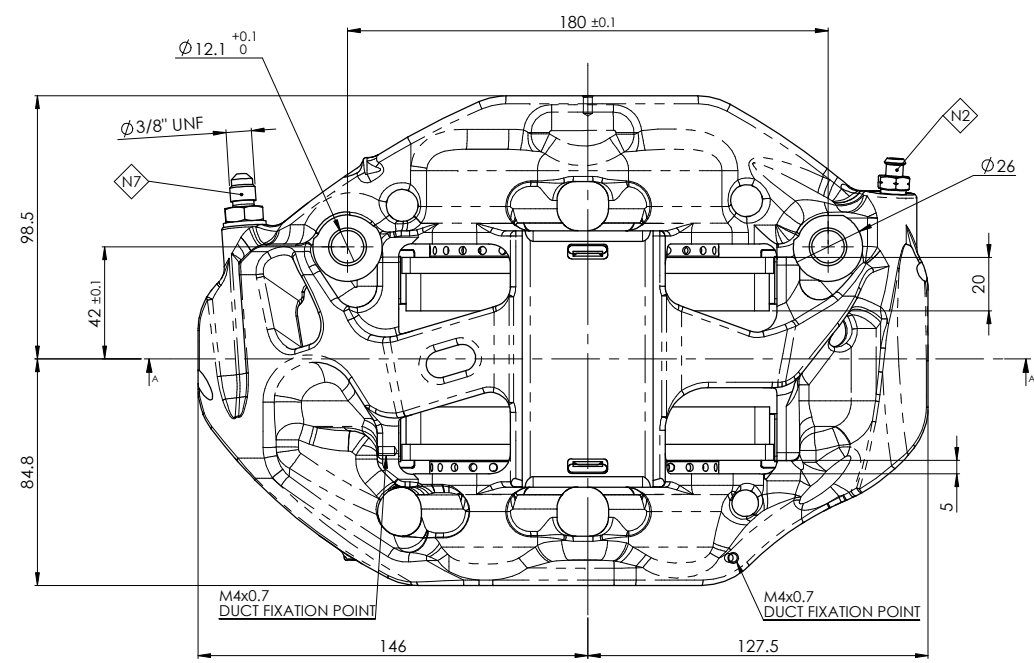
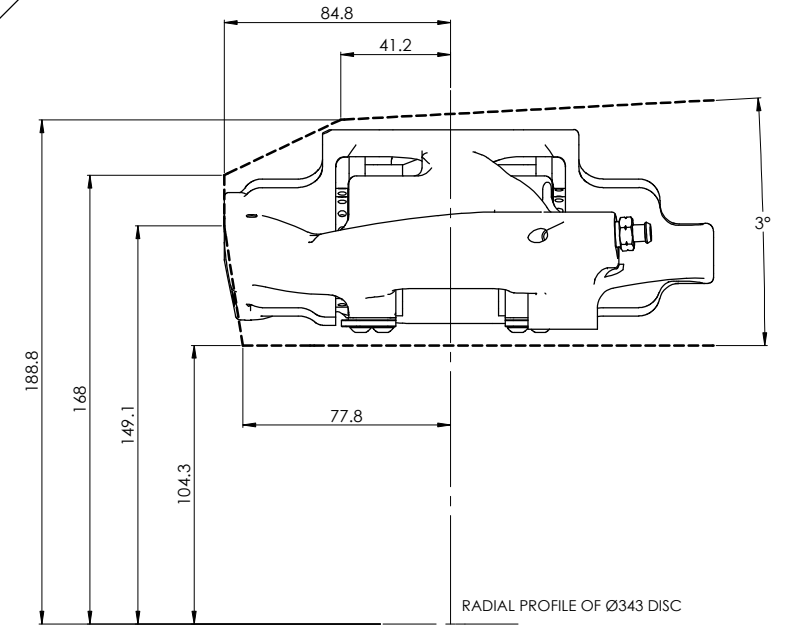


DO NOT SCALE
IF IN DOUBT ASK



N8 PAD SHAPE - 4432X500
MAX THICKNESS - 20mm
AREA - 63.2cm²
VOLUME - 86.4cm³

NOTES:

- N1: LEFT HAND LEADING CALIPER AS DRAWN
LEFT HAND TRAILING CALIPER DIFFERS BY BLEED SCREW LOCATION
RIGHT HAND LEADING CALIPER SYMMETRICALLY OPPOSITE
RIGHT HAND TRAILING CALIPER SYMMETRICALLY OPPOSITE WITH BLEED SCREW AT LARGE BORE END
- BLEED SCREW AND BLANKING PLUG CAN BE INTERCHANGED TO DENOTE LEADING OR TRAILING CONFIGURATION
- N2: BLEED SCREW: 0.375"-24 UNF TORQUE: 14 Nm HOT
18 Nm COLD
- N3: INSTALL CALIPER WITH PAD 0.5mm ABOVE O.D. OF DISC & A MIN CLEARANCE BETWEEN DISC & CALIPER OF 2.5mm
- N4: ALL DIMENSIONS ARE NOMINAL UNLESS STATED. SOLID MODELS ARE AVAILABLE FROM ALCON FOR INSTALLATION PURPOSES
- N5: TOTAL CALIPER PISTON AREAS: 53.9cm²
- N6: CALIPER MOUNTING FACE
- N7: FLUID INLET PORT
- N8: CALIPERS SUPPLIED LESS PADS
- N9: DISC SIZES: Ø343 x 32-36mm THICK
WHEN RUNNING 32mm DISC THE PAD SUPPORTS NEED TO BE POSITIONED AS SHOWN.
WHEN RUNNING 34-36mm DISC THE PAD SUPPORTS NEED TO BE REVERSED.
- N10: Ø343 DISC AXIS
- N11: LASER MARKING INSTRUCTIONS
- N12: DIMENSIONS FOR PAD FITMENT
- N13: ALL DIMENSIONS IN mm

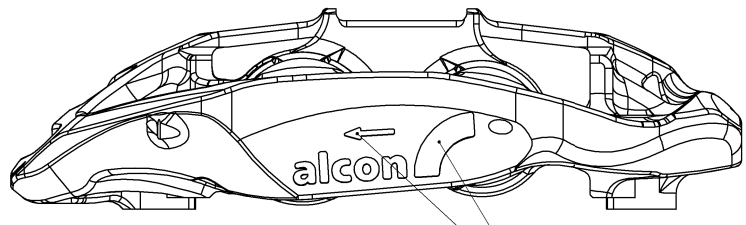
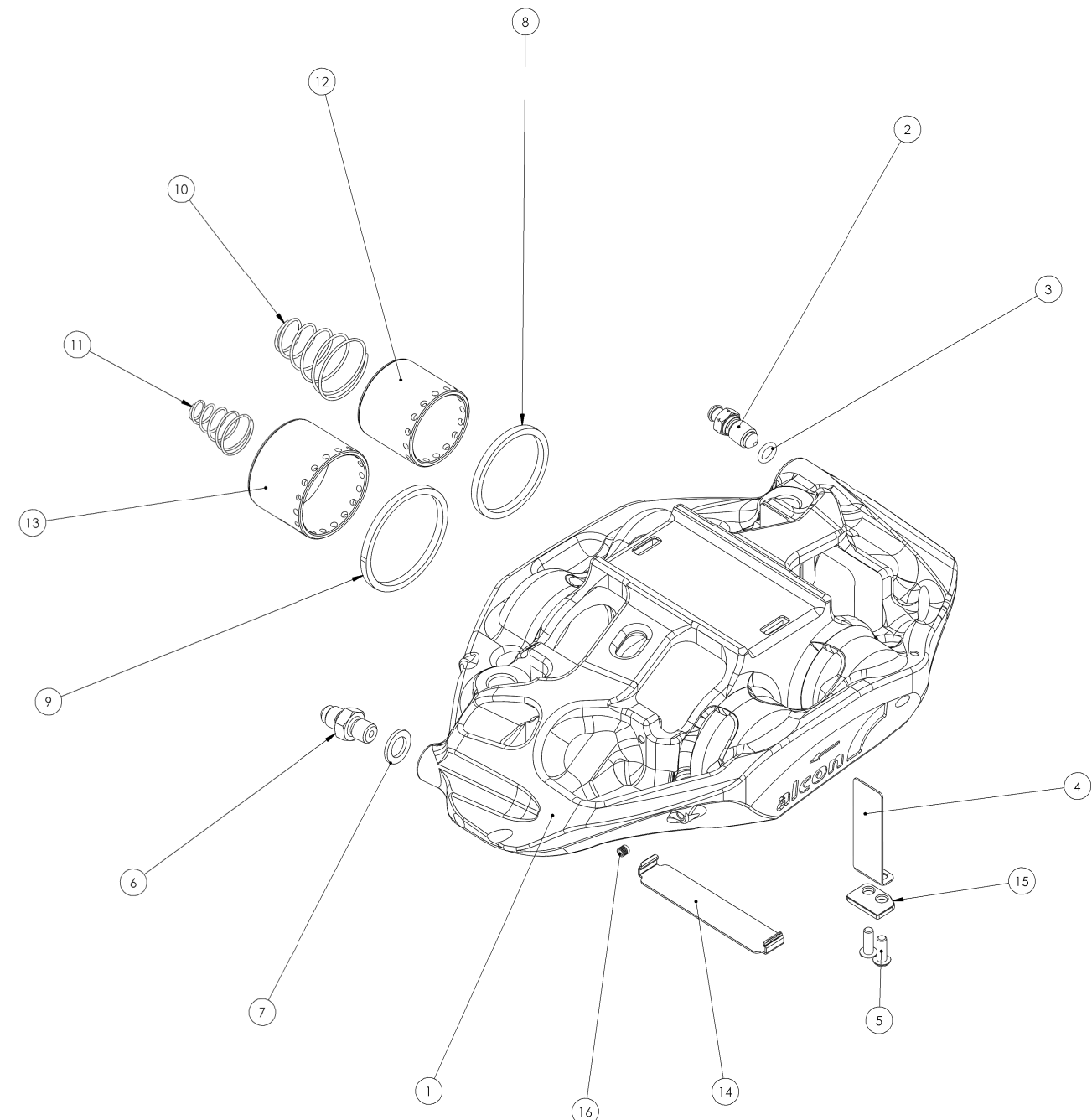
CAR3249J05PSRT	RIGHT	TRAILING	Ø38.1	Ø44.5	SM108	
CAR3249J05PSLT	LEFT	TRAILING	Ø38.1	Ø44.5		
CAR3249J05PSRL	RIGHT	LEADING	Ø38.1	Ø44.5	SM108	
CAR3249J05PSLL	LEFT	LEADING	Ø38.1	Ø44.5		
Alcon Part No.	Hand	Orientation	Small Bore	Large Bore	Bore Detail	Remarks

A FIRST ISSUE		JW	GW
Issue/Change		08.01.13	08.01.13
DRAWN IN SOLIDWORKS		SCALE: 1:1	DRAWN BY: J HUMBLE
WEIGHT: 2.1 Kg (LESS PADS)		DATE: 08.01.2013	ALCON COMPONENTS LIMITED APOLLO TAMWORTH STAFFORDSHIRE B79 7TN TEL: +44(0)1827 723700
REMOVE ALL SHARP EDGES, BURRS AND SWIRL		MATERIAL: ...	CHK'D BY: G WISEMAN
FINISH: Ra (√) Ra (√)		DATE: 08.01.2013	APPROV'D BY: ...
TOLERANCES UNLESS STATED ±0.2 ANGLES: ±0.5°		HEAT TREATMENT/ CURE CYCLE: ...	DATE: ...
SURFACE TREATMENT: ...		NO. OF INSPECTION FEATURES: ...	DATE: ...
PART NAME (Max. 40 chars): TOURING CAR CALIPER INSTALLATION DRAWING		PART NUMBER: CAR32105	
1 of 3		A0	

DO NOT SCALE
IF IN DOUBT ASK

SPARE PARTS LIST FOR CAR3249 J05PSLL/RL & LT/RT

ITEM NO.	QTY	PART NUMBER	DESCRIPTION	REMARKS
1	1	CAR3249J104L	CALIPER BODY	
2	1	FSB3430X689	BLEED SCREW 3/8"UNF ('O' RING TYPE)	10.3/13.3Nm
3	1	SER0080X176	0.280"X0.063" EPDM O-SEAL	
4	4	PSC4432X106	WEAR PLATE	
5	8	BSB0080X753	8-32UNC x 1/2" BUTTON HEAD SCREW	2.3/2.7 Nm WITH LOCTITE 241
6	1	FSA3435X630	3/8" UNF FLUID INLET ADAPTOR	19Nm +/-1Nm WITH LOCTITE 241
7	1	FCG0080X015	COPPER GASKET	
8	2	SES3800X751	Ø38.1 PISTON SEAL	
9	2	SES4500X751	Ø44.5 PISTON SEAL	
10	2	SSC3435X609	2Kg ANTI-KNOCKBACK SPRING	TO SUIT Ø38.1 PISTON
11	2	SSC3435X616	2Kg ANTI-KNOCKBACK SPRING	TO SUIT Ø44.5 PISTON
12	2	PSV3833X250E	Ø38.1 STEEL PISTON	
13	2	PSV4533X255E	Ø44.5 STEEL PISTON	
14	1	PSC4432X117	UPPER WEAR PLATE	
15	4	SSC4432X115	PAD SUPPORT	
16	6	PSC0080X761	KOENIG PLUG 4.0 SHORT STAINLESS STEEL	



FILL ALCON LOGO AND ARROW WITH WHITE PAINT TO RC2336

DRAWN IN SOLIDWORKS WEIGHT: ... grams FINISH: Ra ALL DIMENSIONS ARE BEFORE TREATMENT UNLESS STATED TOLERANCES UNLESS STATED ±0.2 ANGLES: ±0.5°	SCALE: 1:1 MATERIAL: ... HEAT TREATMENT/CURE CYCLE: ... SURFACE TREATMENT: ...	DRAWN BY: J HUMBLE DATE: 08.01.2013 CHK'D BY: G WISEMAN DATE: 08.01.2013 APPVD BY: ... DATE: ... NO. OF INSPECTION FEATURES: ...	ALCON COMPONENTS LIMITED APOLLO TAMWORTH STAFFORDSHIRE B79 7TN TEL: +44(0)1827 723700 NOTE: THIS DRAWING AND INFORMATION THERE UPON IS THE PROPERTY OF ALCON COMPONENTS LTD. IT IS LENT ON THE CONDITION THAT IT, IN WHOLE OR IN PART, SHALL NOT BE REPRODUCED, COPIED, LENT OR DISCLOSED TO ANY PERSON WITHOUT WRITTEN CONSENT OF ALCON AND SHALL BE RETURNED TO ALCON COMPONENTS LTD. PART NAME (Max. 40 chars): TOURING CAR CALIPER INSTALLATION DRAWING PART NUMBER: CAR32105
--	---	--	--

