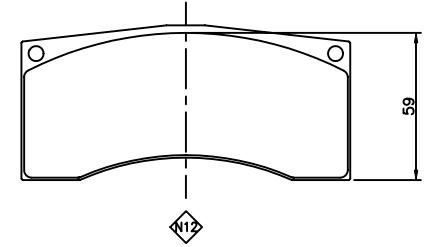
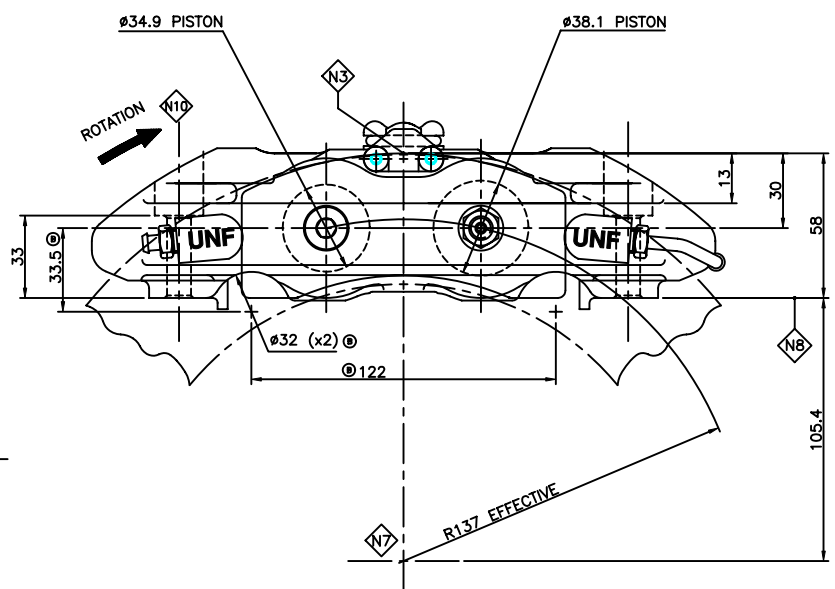
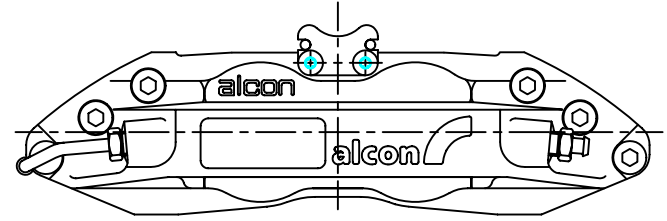
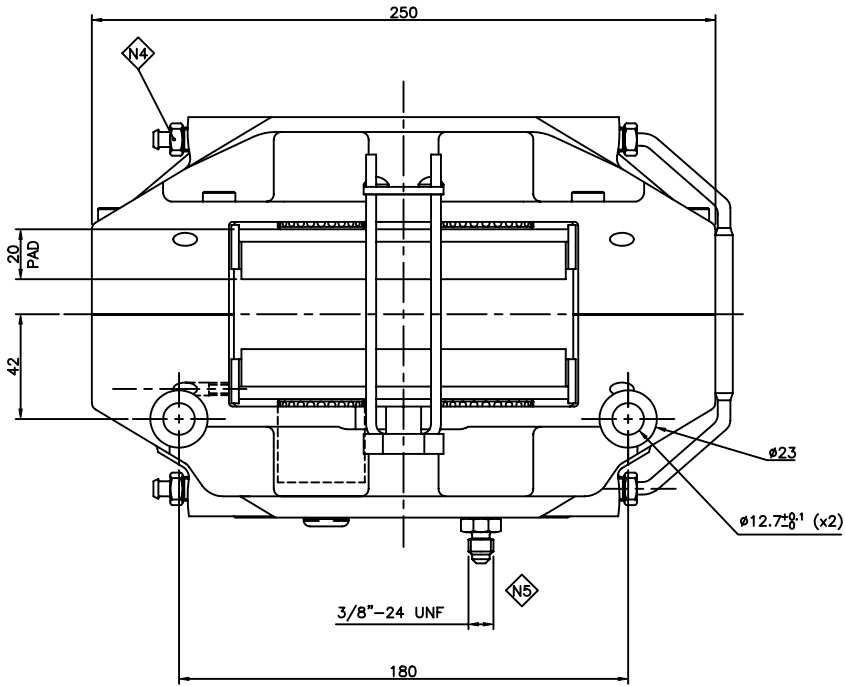
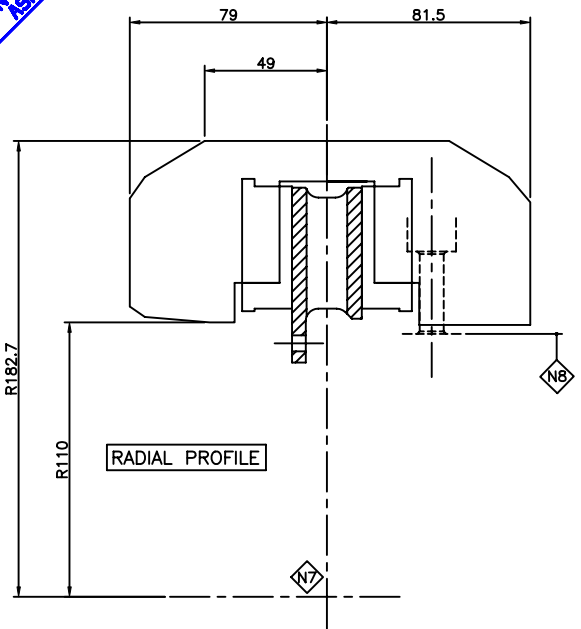


DO NOT SCALE IF IN DOUBT ASK



N	NOTES.
N1	CAR7141E12DSLL AS SHOWN LEFT HAND LEADING CALIPER
N2	CAR7141E12DSRL RIGHT HAND LEADING CALIPER SYMMETRICALLY OPPOSITE
N3	INSTALL CALIPER WITH PAD 0.5mm ABOVE DISC
N4	TIGHTENING TORQUE FOR BLEED SCREWS: - 14Nm HOT - 18Nm COLD
N5	TIGHTENING TORQUE FOR HOSE CONNECTOR: - 19Nm±1
N6	TIGHTENING TORQUE FOR CALIPER MOUNTING BOLTS: - 108Nm±2
N7	DISC AXIS
N8	CALIPER MOUNTING FACE
N9	MANUFACTURING SPECIFICATION RC2013
N10	DISC ROTATION. DISC MUST PASS SMALL PISTON DIAMETER FIRST.
N11	DISC - 328x28
N12	PAD SURFACE AREA - 66.5cm ²
N13	MINIMUM WORN PAD DIMENSION 7.7mm

ISS	LOC.	CHANGE	ISSUE BY	DATE	REASON
A		PROFILE UPDATED ON BODY FIRST ISSUE	G.WOOLFORD	11.07.05	PROFILE UPDATED ON BODY FIRST ISSUE
B			P.SMITH	11.07.05	

FULL SCALE 11.07.05 P.SMITH 11.07.05	CALIPER INSTALLATION GRAND AM GT (REAR) CAR71111
-----------------------------------------------	---------------------------------------------------------------