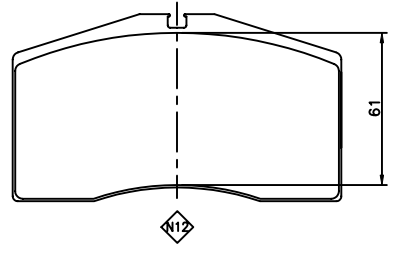
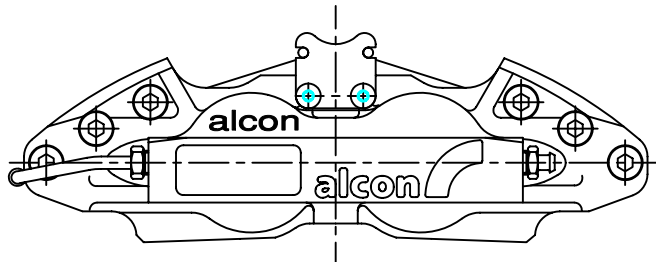
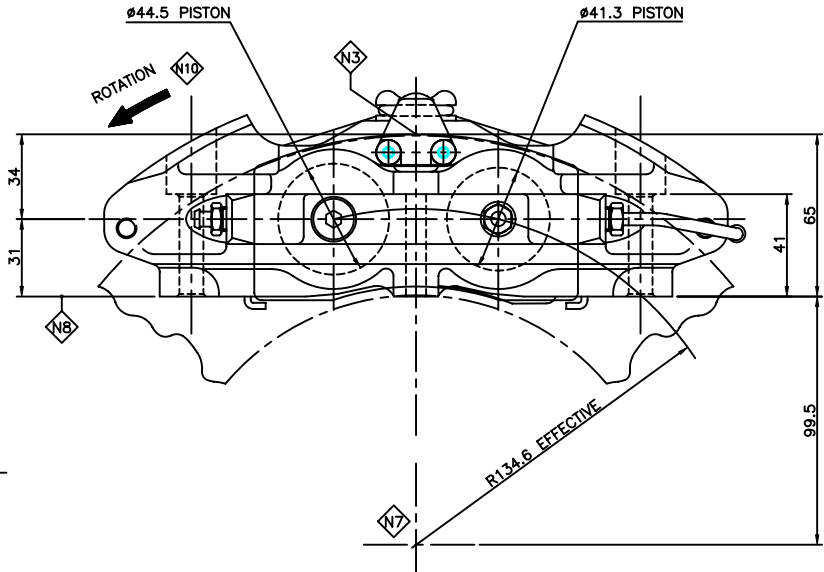
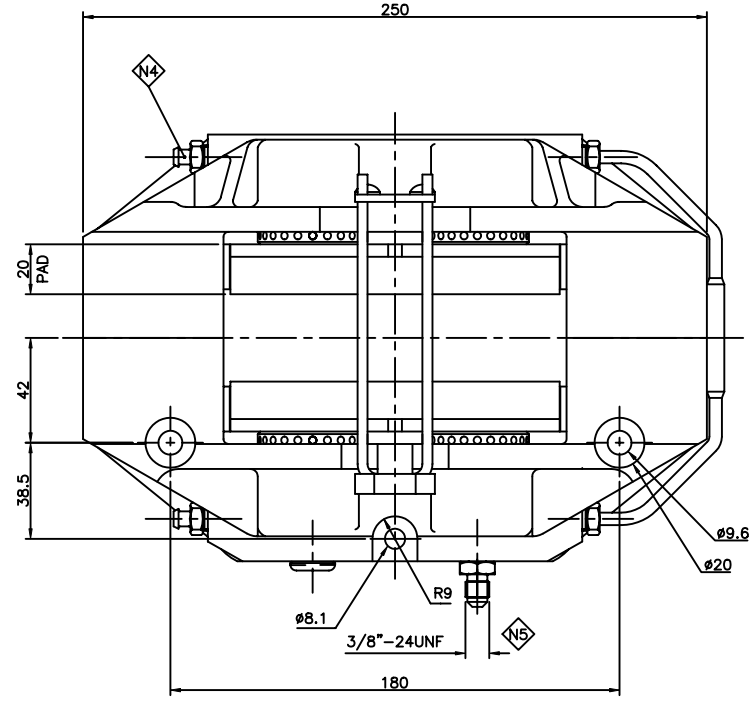
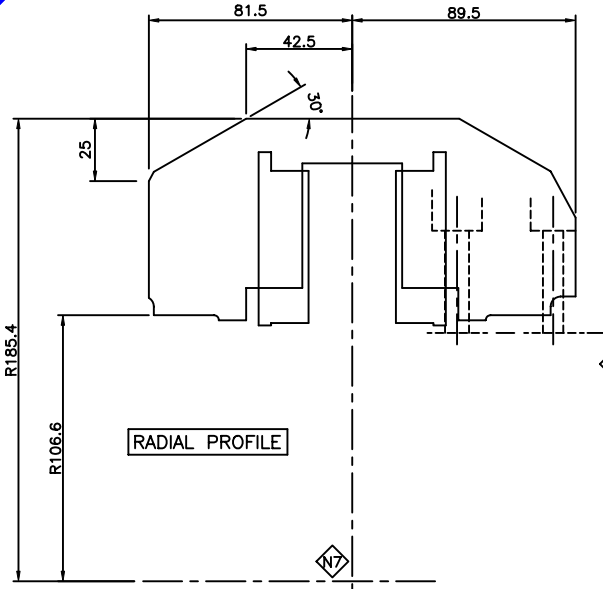


DO NOT SCALE IF IN DOUBT

A
B
C
D
E
F
G
H
I
J
K
L
M
N



N	NOTES.
N1	CAR7649L06DSRT AS SHOWN RIGHT HAND TRAILING CALIPER
N2	CAR7649L06DSL LEFT HAND TRAILING CALIPER SYMMETRICALLY OPPOSITE
N3	INSTALL CALIPER WITH PAD 0.5mm ABOVE DISC
N4	TIGHTENING TORQUE FOR BLEED SCREWS: - 14Nm HOT - 18Nm COLD
N5	TIGHTENING TORQUE FOR HOSE CONNECTOR: - 19Nm±1
N6	TIGHTENING TORQUE FOR CALIPER MOUNTING BOLTS: - 108Nm±2
N7	DISC AXIS
N8	CALIPER MOUNTING FACE
N9	MANUFACTURING SPECIFICATION RC2013
N10	DISC ROTATION. DISC MUST PASS SMALL PISTON DIAMETER FIRST.
N11	DISC - $\phi 328 \times 32 / 35$
N12	PAD SURFACE AREA - 78.0cm ²
N13	MINIMUM WORN PAD DIMENSION 7.7mm

ISS LDC CHANGE		FIRST ISSUE		REVISED BY	
NO.	REASON	DATE	BY	DATE	BY
1	INITIAL	08/08/04	P WATTS	08/08/04	G WOOLFORD
2	REVISION				
3	REVISION				
4	REVISION				
5	REVISION				
6	REVISION				

DESIGNED BY	P WATTS	DATE	08/08/04
CHECKED BY	G WOOLFORD	DATE	08/08/04
APPROVED BY		DATE	
MANUFACTURED BY		DATE	
REVISIONS		DATE	
REASON FOR CHANGE		DATE	
TOLERANCES			
FINISHES			
CONVERSIONS			
OTHER			
CALIPER INSTALLATION	GRAND AM GT (FRONT)		
PART NUMBER			CAR76i28