

# information



## Daytona Prototype 'DP88' front caliper

---

### options

---

- 32 mm rotor with 28mm pads
- 33.5mm rotor with 27mm pads
- 35.6mm rotor with 26mm pads

### features and benefits

---

- Meets Grand Am 88mm stack rule.
- 9% stiffer than previous design.
- Six piston staggered bore design for better pedal feel and reduced pad taper.
- Machined from billet aircraft aluminum alloy for superior strength at high temperatures.
- Mono-block construction.
- Large pad area and volume for maximum braking performance and pad life.
- Hard anodized aluminum pistons.
- Ventilated piston inserts to reduce heat transfer through the brake fluid.
- Quick release pad retainer for rapid pad changes.
- O-ring type bleed screws for easier bleeding.



### specifications

---

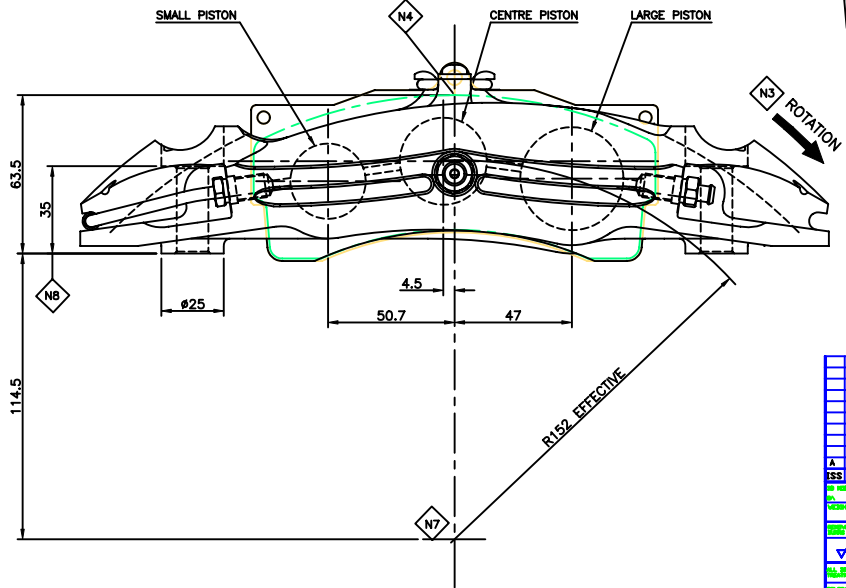
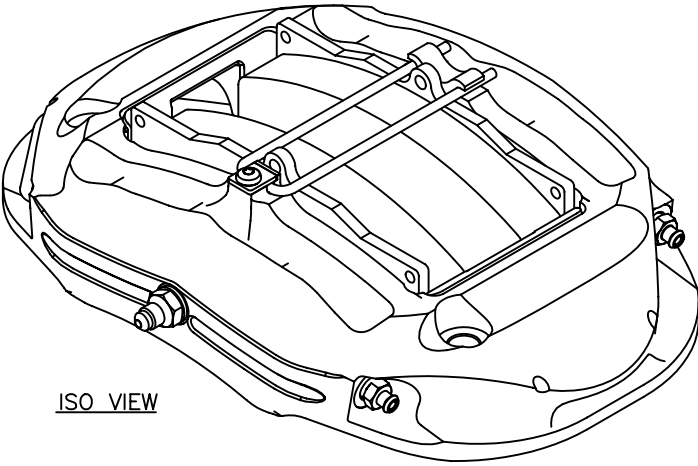
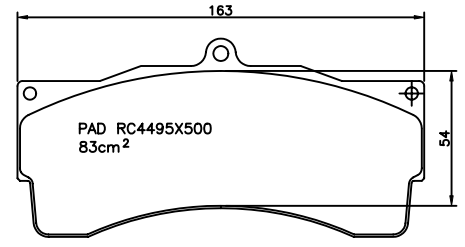
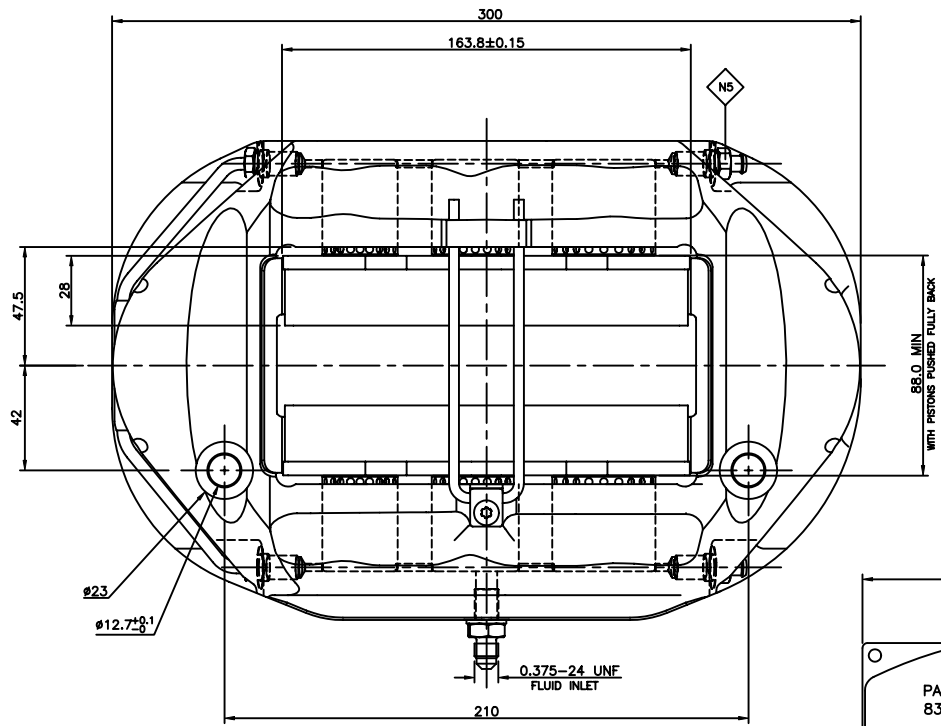
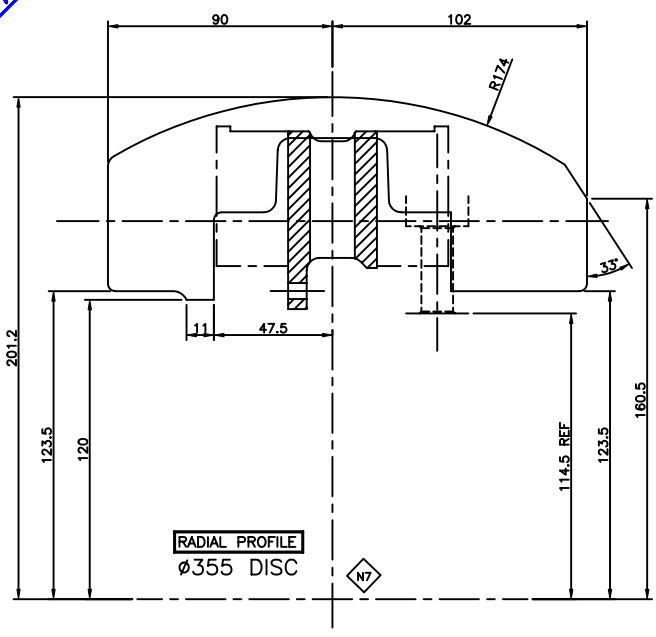
<b>Piston size</b>	1.625"/1.375"/1.188"
<b>Pad area</b>	166cm <sup>2</sup> / 25.7in <sup>2</sup>
<b>Pad volume</b>	366cm <sup>3</sup> / 22.5in <sup>3</sup>
<b>Pad thickness (max)</b>	28mm / 1.10"
<b>Standard 48 vane rotor</b>	14"x1.32" / 355x33.5mm
<b>Optional 252 vane rotor</b>	14"x1.25" / 355x32mm
<b>DP88 front caliper</b>	6.5 lbs.

### applications

---

Grand Am Daytona Prototypes, Sports cars, GT cars

DO NOT SCALE IF IN DOUBT ASK



- NOTES.
- N1 CAR9549Z55DSLTL AS SHOWN LEFT HAND TRAILING CALIPER
  - N2 CAR9549Z55DSRTL SYMMETRICALLY OPPOSITE RIGHT HAND TRAILING CALIPER
  - N3 DISC ROTATION. CALIPER MUST BE INSTALLED WITH BLEED SCREWS UPPERMOST
  - N4 INSTALL CALIPER WITH PAD 0.5mm ABOVE DISC
  - N5 TIGHTENING TORQUE FOR BLEED SCREWS:  
- 14Nm HOT  
- 18Nm COLD  
BLEED SCREW MUST BE UPPERMOST
  - N6 ALL DIMENSIONS ARE NOMINAL
  - N7 DISC AXIS
  - N8 CALIPER MOUNTING FACE
  - N9 MANUFACTURING SPECIFICATION RC2013
  - N10 DISC & PAD COMBINATIONS:  
Ø355x32.0 / 28mm PADS  
Ø355x33.5 / 27mm PADS  
Ø355x35.6 / 26mm PADS
  - N11 PAD ABUTMENT MUST BE CHANGED TO ASC4495X548, FOR USE WITH 35.6 DISC
  - N12 PAD SURFACE AREA - 83.0cm<sup>2</sup>
  - N13 THIS CALIPER HAS BEEN DESIGNED FOR DISC DIAMETERS UP TO Ø375 - RADIAL PROFILES AVAILABLE UPON REQUEST

CAR9549Z55DSRTL	RIGHT TRAILING	30.2	34.9	41.3	
CAR9549Z55DSLTL	LEFT TRAILING				
CALIPER PART No	HAND	SMALL PISTON	CENTRE PISTON	LARGE PISTON	REMARKS

ISS LDC CHANGE		13.07.05	13.07.05		
DESIGNED BY	SH	13.07.05			
CHECKED BY	GW	13.07.05			
<b>CALIPER INSTALLATION</b>					
<b>CAR95i25</b>					