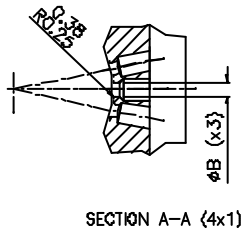
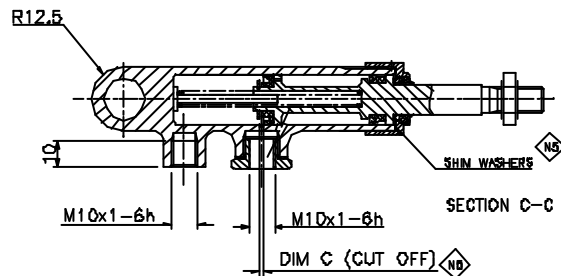


SECTION B-B



1	REFER SURFACE TREATMENT	1	BLACK COAT WITH
2	REFER FINISH	2	SEE DIMENSIONAL LEVEL
3	SEE DIMENSIONAL LEVEL	3	SEE DIMENSIONAL LEVEL
4	SEE DIMENSIONAL LEVEL	4	SEE DIMENSIONAL LEVEL
5	SEE DIMENSIONAL LEVEL	5	SEE DIMENSIONAL LEVEL
6	SEE DIMENSIONAL LEVEL	6	SEE DIMENSIONAL LEVEL
7	SEE DIMENSIONAL LEVEL	7	SEE DIMENSIONAL LEVEL
8	SEE DIMENSIONAL LEVEL	8	SEE DIMENSIONAL LEVEL
9	SEE DIMENSIONAL LEVEL	9	SEE DIMENSIONAL LEVEL
10	SEE DIMENSIONAL LEVEL	10	SEE DIMENSIONAL LEVEL

NOTES

- N1 ASSEMBLY AND TEST PROCEDURE RC2016
- N2 MAXIMUM PRESSURE 2000psi (138 Bar)
- N3 MAXIMUM STROKE : 29.5mm (1.16")
- N4 AVERAGE WEIGHT: 130g (0.29lbs)
- N5 EACH MASTER CYLINDER PUSH ROD IS SELECTIVELY ASSEMBLED TO PROVIDE SHORT LOST TRAVEL. SHIM WASHER THICKNESS IS DEFINED DURING THE ASSEMBLY PROCESS.
- N6 FLUID INLET & OUTLET CONNECTION TORQUE : 12.5-15lbf (17-20Nm) WITH COPPER SEALING WASHER
- N7 0.25° SPHERICAL BEARING REF BSS0080X392. WHEN SPECIFIED, THE BEARING IS INSTALLED AND RETAINED BY STAKING.
- N8 PISTON RETAINER NUT (ANODISED GOLD) TIGHTEN TO 12-14lbf (16-19Nm)
- N9 MARK AS SPECIFIED
- N10 PART NUMBERS

REVISION		
ISSUE	DATE	PARTICULARS
A	20.08.04	FIRST ISSUE

BORE	PART NUMBER	ØA	ØB	ØX	DIM Y	DIM C	REMARKS	SERVICE KIT
15.9 (0.625")	MAR5200HM161MBB	26	0.7	30	28	0.9/1.2		MAR5200SK
17.8 (0.700")	MAR5210HM161MBB						MAR5210SK	
19.05 (0.750")	MAR5220HM161MBB						MAR5220SK	
20.62 (0.812")	MAR5230HM161MBB						MAR5230SK	
22.22 (0.875")	MAR5240HM161MBB	28	0.7	32	30	0.9/1.2		MAR5240SK
23.81 (0.937")	MAR5250HM161MBB	31.6	0.7	34	32	0.9/1.2	SEE DETAIL X	MAR5250SK
25.40 (1.000")	MAR5260HM161MBB						MAR5260SK	

© 2004 Alcon Components Ltd Tamworth England THIS DOCUMENT IS CONFIDENTIAL AND THE DESIGN AND THE DRAWING THEREIN ARE THE PROPERTY OF ALCON LTD. THE INFORMATION AND ANY INFORMATION BEEN OR MAY BE USED, REPRODUCED OR DISCLOSED BY ANY THIRD PARTY WITHOUT THE PRIOR WRITTEN AUTHORIZATION OF ALCON COMPONENTS LTD.			
DRAWN	PS	DATE	20.08.04
APPROVED	PJS	SCALE	
TITLE MASTER CYLINDER INSTALLATION DRAWING			
DRG No. MAR5200HM161MB			